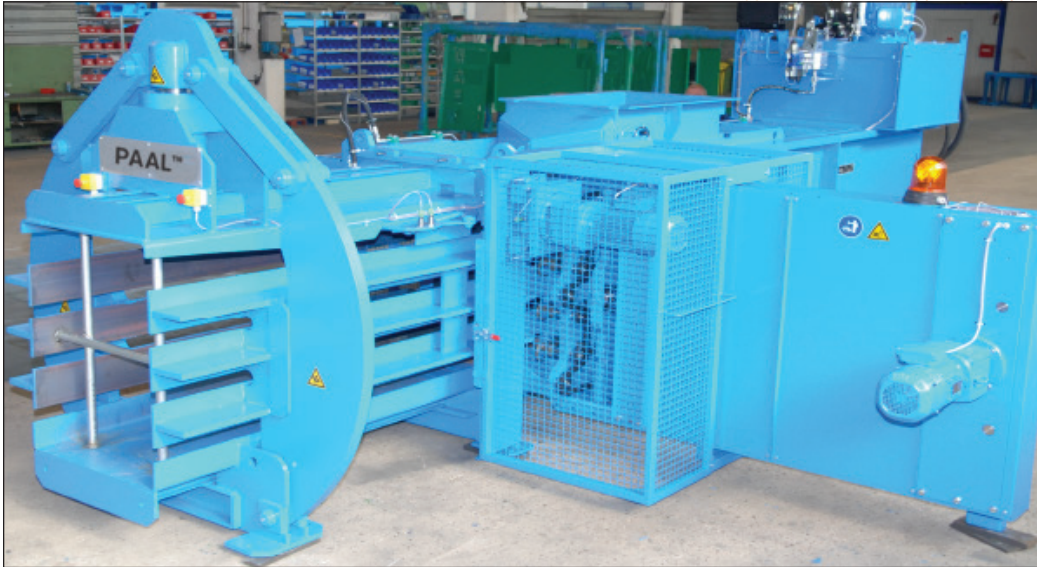


PACOMAT II Baler

D-Series



Kadant PAAL's PACOMAT II channel baling press with horizontal wire tying system is ideal for various qualities of waste paper, cardboard, cartons, trim, foils, and many other materials. This channel bale press is robust and fully automatic making it an economic baler option.

Kadant PAAL was founded in 1854 in Osnabrück, Germany. Since its introduction of the first continuously operated horizontal baler in 1960, PAAL has delivered more than 31,000 machines and today is the #1 channel baler manufacturer in Europe.

PACOMAT II Baler D-Series Overview



Features

- Optimized knife, stamper, and channel design
- Modern axial piston pumps with low drive power
- Densitronic control system for tunnel adjustment
- Modular feeding concept



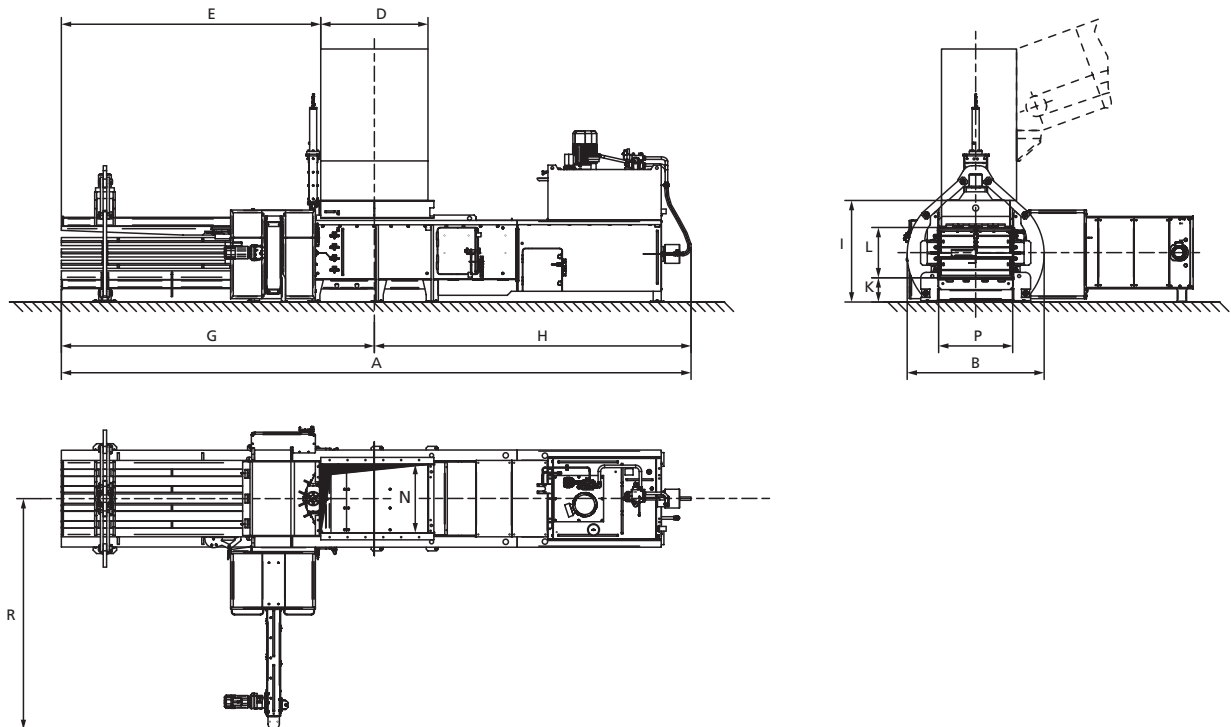
Benefits

- High throughput and bale weights
- Low energy consumption
- Quick response to various material grades

PAAL™

Technical Data and Measurements

PACOMAT II D-Series		II-35D		II-50D				II-65D			
Pressing force	US tons	40		55				71			
Spec. pressing force	psi	74		100				111			
Hydraulic reference pressure	psi	4560		4560				4560			
Tunnel cross section	inch	39 x 27		39 x 27				39 x 27			
Hopper opening	inch	41 x 24		41 x 24				41 x 24			
Feeding volume	yd ³	11.7		11.7				11.7			
Number of wires	pieces	4		4				4			
Driving power	HP	20	30	20	30	50	60	20	30	50	60
Hydraulic pump flow	gal/mn	42	42	42	42	69	69	42	42	69	69
Oil reservoir capacity	gal	145	145	145	145	198	198	145	145	198	198
Maximum performance without material	max. yd ³ /h	590	590	152	191	289	318	152	191	289	318
Press Capacity (Weight)											
• 0.93 lb/ft ³ (e.g. foil)	US t/h	2.5	3.2	2.0	2.4	3.7	4.0	1.5	1.8	3.0	3.3
• 2.18 lb/ft ³ (e.g. flattened OCC)	US t/h	5.6	7.0	4.5	5.6	8.5	9.4	3.5	4.4	6.9	7.6
• 3.75 lb/ft ³ (e.g. mixed paper)	US t/h	8.0	9.8	6.1	7.7	11.7	12.8	4.8	6.1	9.4	10.3
• 5 lb/ft ³ (e.g. mixed paper)	US t/h			9.4	11.8	17.7	19.5	7.2	9.2	14.1	15.5
Baler weight (dependent on options)	US tons	8.8		9.4				10			
Sound level without material at 1 m distance	dB(A)	<85		<85				<85			



	A	B	D	E	G	H	I	K	L	N	P	R
PACOMAT II-35D	23' 9"	5' 7"	3' 5"	9' 5"	11' 1"	12' 8"	5' 8"	1'	3' 3"	2'	2' 4"	9' 6"
PACOMAT II-50D	23' 8"	6' 5"	3' 5"	9' 5"	11' 1"	12' 7"	5' 8"	1'	3' 3"	2'	2' 4"	9' 6"
PACOMAT II-65D	25' 8"	6' 5"	3' 5"	10' 11"	12' 7"	13'	5' 8"	1' 2"	3' 3"	2'	2' 4"	9' 6"

Dimensions are in feet and inches.

Specifications are for reference only and subject to change.